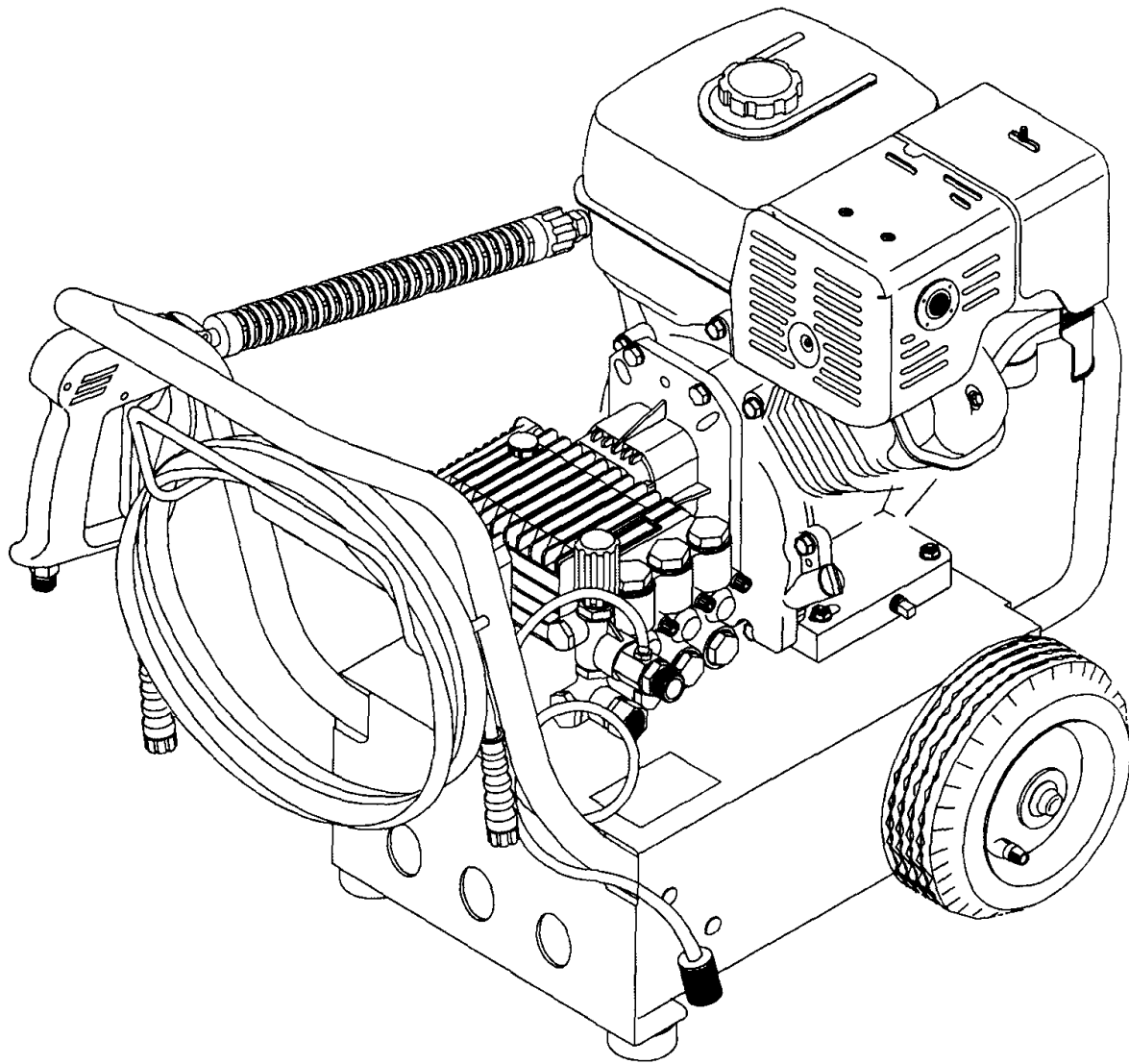


Parts Manual

Mfg. No: 1295-0
3,200 PSI



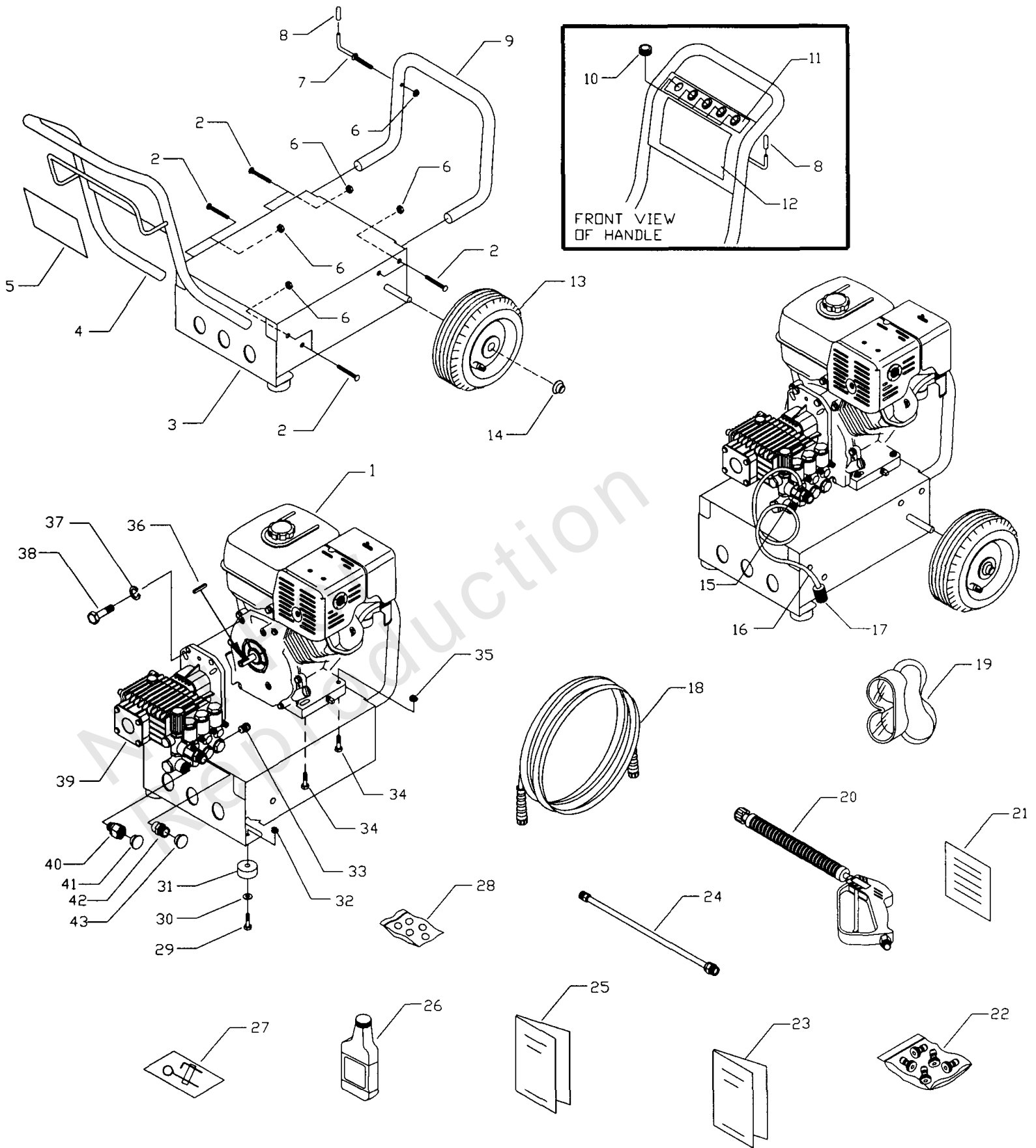
Model Components	Page
Main Unit.....	4
Pump.....	6
Unloader.....	10
Torque Specification Chart.....	12

Not For
Reproduction

Main Unit

Note: Unless noted otherwise, use the standard torque specifications

Mfg. No: 1295-0



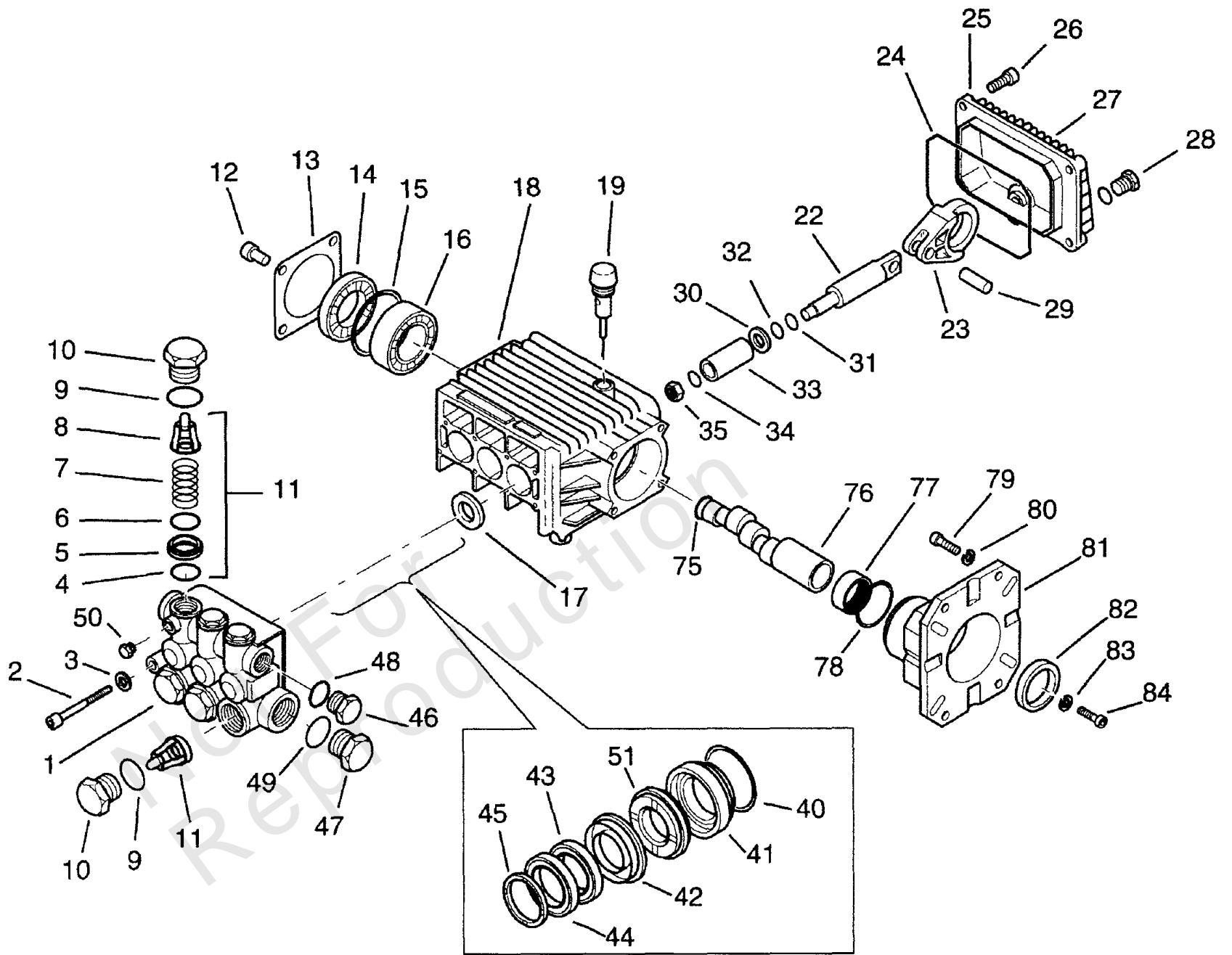
Main Unit

REF NO	PART NO	QTY	DESCRIPTION
1	-----	1	ENGINE, Honda 11HP -(NSP)
2	B2043	8	BOLT, 5/16" - 18 x 1-3/4" Carriage
3	BB2226B	1	BASE
4	CB3861A	1	HANDLE
5	B4160	1	DECAL, Instructions
6	99583	9	NUT, 5/16" - 18 Hex Flange
7	B2150	1	HOOK, 5/16" Square Neck Gun
8	B2516	2	CAP, Black Vinyl .280"
9	CB4105	1	BUMPER
10	30809	5	GROMMET, 1/8" - 11/16"
11	B4159	1	DECAL, 5 QD Nozzles
12	B4158	1	DECAL, Unit
13	88521	2	ASSEMBLY, Wheel 10" Dia.
14	75402	2	PUSHNUT, .50"
15	48031G	1	CLAMP, Hose 7/16" Dia.
16	A1040D	1	HOSE, 54" Chemical Inject
17	A1041	1	FILTER, Chemical Hose
18	B3636	1	HOSE, 3/8" x 50'
19	87815	1	GOGGLES, Safety
20	B1436A	1	GUN, with Molded Grip
21	88681	1	CARD, Owners Registration
22	B4155	1	KIT, Nozzles QD
23	B3862	1	MANUAL, Owners
24	B3858	1	ASSY, Wand Ext. with QD
25	B1464	1	MANUAL, Honda
26	-----	2	BOTTLE, Oil -(NSP)
27	B2163	1	KIT, Nozzle Cleaning
28	B4175	1	KIT, O-Ring Maintenance
29	42909	2	HHCS, M8 - 1.25 x 30
30	50190	2	FLAT WASHER, 10GA
31	27007	2	VIB MOUNT, Donut Type
32	67989	2	NUT, Locking M8 - 1.25
33	B1554	1	VALVE, Thermal Relief
34	64416	4	BOLT, M10 - 1.5 x 45 mm Lg.
35	52859	4	NUT, Locking M10 - 1.50
36	63281	1	KEY, 1/4" sq. x 2" Lg.
37	22237	4	LOCKWASHER, 3/8"
38	23645	4	SHCS, 3/8" - 1 1/4"
39	B1843	1	PUMP, 3200 PSI @ 4GPM
40	95320	1	CONNECTOR, Garden Hose
41	97098	1	CAP, Garden Hose Inlet
42	95457	1	ADAPTER
43	97100	1	CAP, High Pressure Adapter

Pump

Note: Unless noted otherwise, use the standard torque specifications

Mfg. No: 1295-0



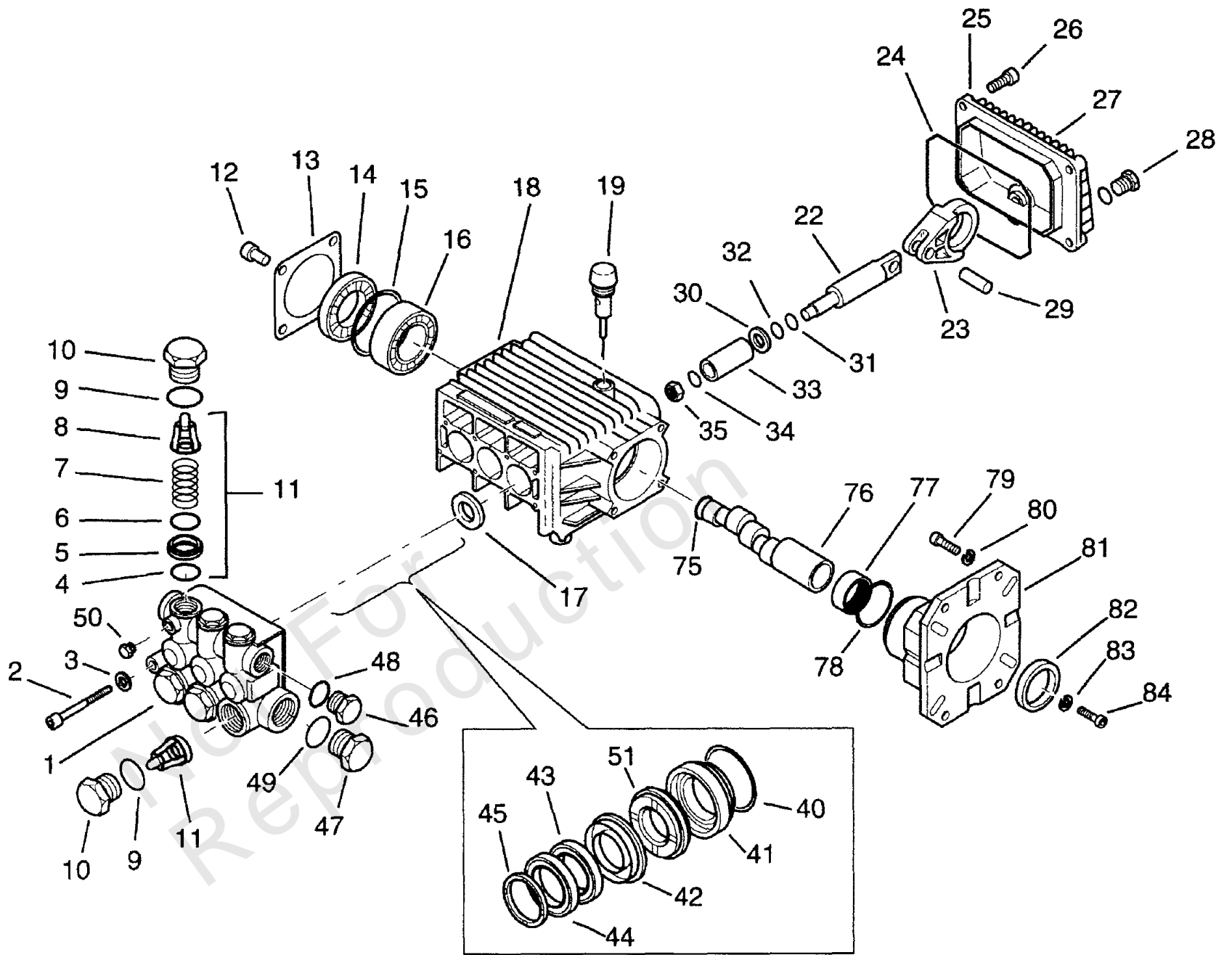
Pump

REF NO	PART NO	QTY	DESCRIPTION
1	10092294P	1	Pumphead
2	10192294P	8	Screw
3	12492293P	8	Washer
4	108B3169	6	O-Ring
5	109B3169	6	Valve Seat
6	110B3169	6	Valve
7	111B3169	6	Spring
8	112B3169	6	Valve Cage
9	10892293P	6	O-Ring
10	109B1843	6	Cap Screw
11	115B3169	6	Valve Assy.
12	10292294P	4	Screw
13	10392294P	1	Bearing Cover
14	10492294P	1	Spacer
15	12992293P	1	O-Ring
16	10592294P	1	Ball Bearing
17	116B1843	3	Oil Seal
18	10692294P	1	Crankcase
19	94504	1	Oil Dip Stick
22	10792294P	3	Piston Guide
23	10892294P	3	Connecting Rod
24	10992294P	1	O-Ring
25	11092294P	1	Rear Cover
26	11192294P	5	Screw
27	11292294P	1	O-Ring
28	10492293P	1	Cap Screw
29	11392294P	3	Pin
30	11492294P	3	Washer
31	11592293P	3	Anti Ext. Ring
32	11492293P	3	O-Ring
33	11592294P	3	Piston
34	11392293P	3	Washer
35	11292293P	3	Nut
40	133B1843	3	O-Ring
41	134B1843	3	Packing Retainer
42	135B1843	3	Intermediate Ring
43	136B1843	3	Packing
44	117B3169	3	Packing
45	116B3169	3	Head Ring
46	10192293P	1	Cap Screw
47	11692294P	1	Cap Screw
48	13492294P	1	Washer
49	11892294P	1	Washer
50	11992294P	1	Cap Screw
51	144B1843	3	Seal, Low Press
75	12092294P	1	Retaining Ring
76	12192294P	1	Crankshaft
77	12292294P	1	Roller Bearing
78	12992293P	1	O-Ring
79	149B1843	4	Screw 5/16 x 1
80	150B1843	4	Washer 8mm

Pump

Note: Unless noted otherwise, use the standard torque specifications

Mfg. No: 1295-0



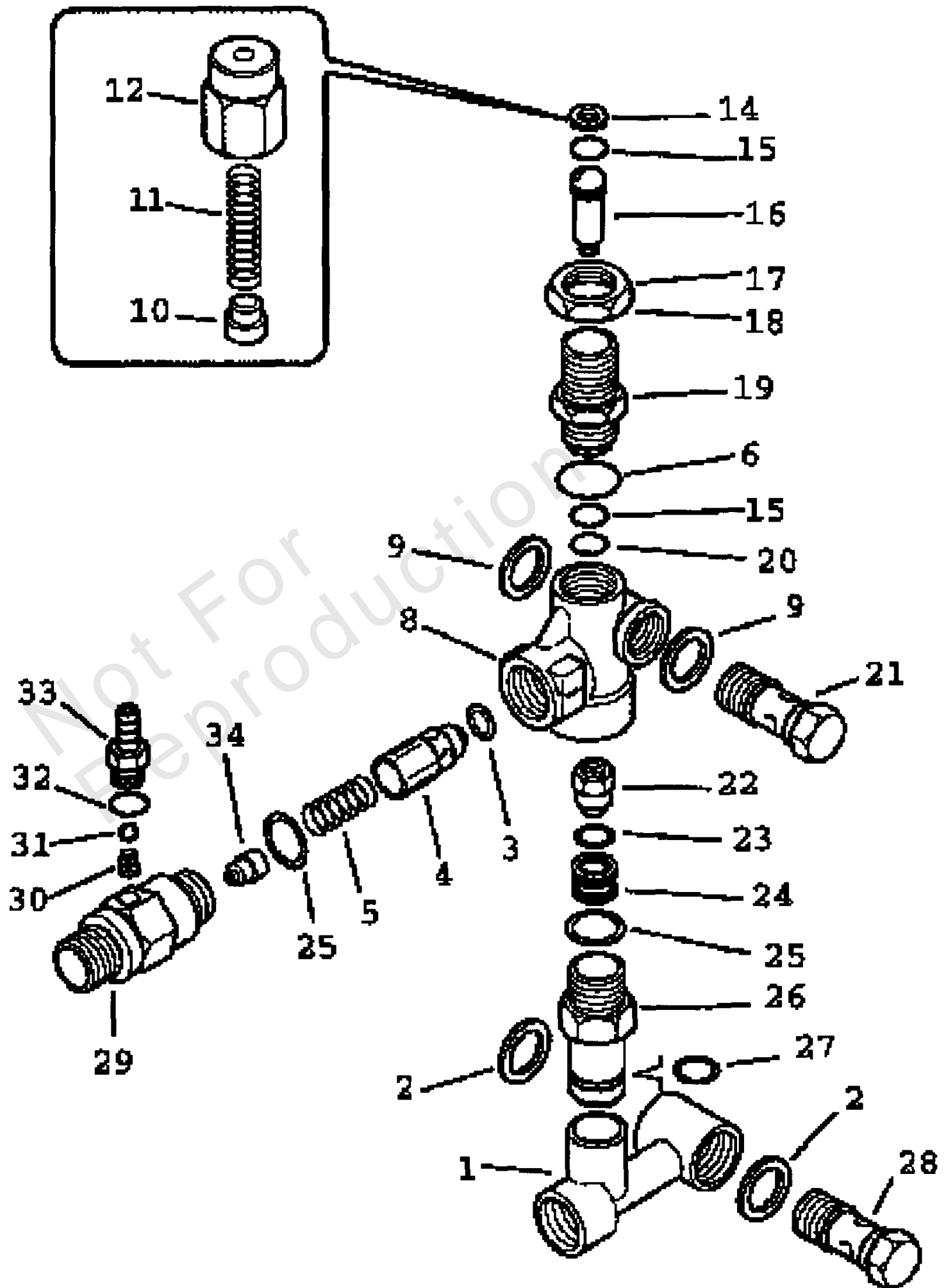
Pump

REF NO	PART NO	QTY	DESCRIPTION
81	12392294P	4	Gas Flange
82	12492294P	1	Oil Seal
83	10692293P	4	Washer
84	12692294P	4	Screw
	50392294P		Kit -(Includes Item No. 17. This kit will service 3 cylinders)
	201B1843		Kit -(Includes Item Nos. 43, 44 & 51. This kit will service 3 cylinders)
	202B1843		Kit -(Includes Item No. 42. This kit will service 3 cylinders)
	203B1843		Kit -(Includes Item No. 45. This kit will service 3 cylinders)
	50092294P		Kit -(Includes Item Nos. 4, 5, 6, 7, 8 & 11. This kit will service 3 cylinders)
	50192294P		Kit -(Includes Item Nos. 9 & 10. This kit will service 3 cylinders)
	206B1843		Kit -(Includes Item Nos. 40 & 41. This kit will service 3 cylinders)
	50492294P		Kit -(Includes Item Nos. 40, 41, 42, 43, 44, 45 & 51. This kit will service 1 cylinder)

Unloader

Note: Unless noted otherwise, use the standard torque specifications

Mfg. No: 1295-0



Unloader

REF NO	PART NO	QTY	DESCRIPTION
1	155B1843	1	Manifold
2	156B1843	2	Seal Washer
3	157B1843	1	O-Ring
4	158B1843	1	Check Valve, Hexa.
5	159B1843	1	Spring
6	160B1843	1	O-Ring
8	161B1843	1	Valve Body Brass
9	162B1843	2	Seal Washer
10	163B1843	1	Spring Support
11	164B1843	1	Spring White
12	165B1843	1	Cap Brass
14	166B1843	1	Back up Ring
15	167B1843	1	O-Ring
16	168B1843	1	Piston, SS
17	169B1843	1	Nut, Ring
18	170B1843	1	Screw Set
19	171B1843	1	Piston Housing
20	172B1843	1	Backup Ring
21	173B1843	1	Banjo Bolt
22	174B1843	1	Valve
23	175B1843	1	O-Ring
24	176B1843	1	Seat
25	177B1843	2	O-Ring
26	178B1843	1	Bypass Fitting
27	179B1843	1	O-Ring
28	180B1843	1	Banjo Bolt
29	181B1843	1	Injector Body
30	182B1843	1	Spring Conical
31	183B1843	1	Ball
32	184B1843	1	O-Ring
33	185B1843	1	Hose Barb
34	186B1843	1	Injector Nozzle
35	187B1843	0	Unloader Complete

Hardware Identification & Torque Specifications

Torque Specification Chart								
FOR STANDARD METRIC MACHINE HARDWARE (Tolerance ± 20%)								
Property Class	5.6		8.8		10.9		12.9	
	Class 5.6		Class 8.8		Class 10.9		Class 12.9	
Size Of Hardware	in/lbs	Nm.	in/lbs	Nm.	in/lbs	Nm.	in/lbs	Nm.
	ft/lbs		ft/lbs		ft/lbs		ft/lbs	
M3	5.88	.56	13.44	1.28	19.2	1.80	22.92	2.15
M4	13.44	1.28	30.72	2.90	43.44	4.10	52.56	4.95
M5	26.4	2.50	60.96	5.75	5.97	8.10	7.15	9.7
M6	44.64	4.3	7.3	9.9	10.3	14	12.1	16.5
M7	5.2	7.1	12.1	16.5	16.9	23	19.9	27
M8	7.7	10.5	17.7	24	25	34	29	40
M10	15	21	35	48	50	67	59	81
M12	26	36	61	83	86.2	117	103	140
M14	42	58	101	132	136	185	162	220
M16	64	88	147	200	210	285	250	340
M18	89	121	202	275	287	390	346	470
M20	126	171	290	390	405	550	486	660
M22	169	230	390	530	559	745	656	890
M24	217	295	497	375	708	960	840	1140
M27	320	435	733	995	1032	1400	1239	1680
M30	435	590	995	1350	1401	1900	1681	2280
M33	590	800	1349	1830	1902	2580	2278	3090
M36	759	1030	1740	2360	2441	3310	2935	3980
M39	988	1340	2249	3050	3163	4290	3798	5150

Torque Specification Chart						
FOR STANDARD MACHINE HARDWARE (Tolerance ± 20%)						
Hardware Grade	No Marks		SAE Grade 5		SAE Grade 8	
	SAE Grade 2		SAE Grade 5		SAE Grade 8	
Size Of Hardware	in/lbs	Nm.	in/lbs	Nm.	in/lbs	Nm.
	ft/lbs		ft/lbs		ft/lbs	
8-32	19	2.1	30	3.4	41	4.6
8-36	20	2.3	31	3.5	43	4.9
10-24	27	3.1	43	4.9	60	6.8
10-32	31	3.5	49	5.5	68	7.7
1/4-20	66	7.6	8	10.9	12	16.3
1/4-28	76	8.6	10	13.6	14	19.0
5/16-18	11	15.0	17	23.1	25	34.0
5/16-24	12	16.3	19	25.8	29	34.0
3/8-16	20	27.2	30	40.8	45	61.2
3/8-24	23	31.3	35	47.6	50	68.0
7/16-14	30	40.8	50	68.0	70	95.2
7/16-20	35	47.6	55	74.8	80	108.8
1/2-13	50	68.0	75	102.0	110	149.6
1/2-20	55	74.8	90	122.4	120	163.2
9/16-12	65	88.4	110	149.6	150	204.0
9/16-18	75	102.0	120	163.2	170	231.2
5/8-11	90	122.4	150	204.0	220	299.2
5/8-18	100	136	180	244.8	240	326.4
3/4-10	160	217.6	260	353.6	386	525.0
3/4-16	180	244.8	300	408.0	420	571.2
7/8-9	140	190.4	400	544.0	600	816.0
7/8-14	155	210.8	440	598.4	660	897.6
1-8	220	299.2	580	788.8	900	1,244.0
1-12	240	326.4	640	870.4	1,000	1,360.0

The guides and ruler furnished below are designed to help you select the appropriate hardware.



Nut, M8

Thread Diameter (mm)

Inside Diameter (in) Threads per inch

Nut, 1/2-16

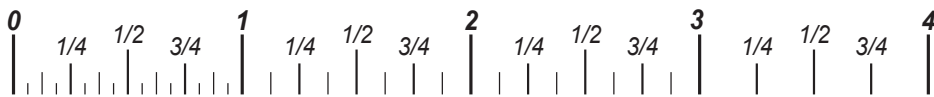


Screw, M8- 1.25 x 25

Thread Diameter (mm) Distance between threads (mm) Body Length (mm)

Body Diameter Threads per inch Body Length (in)

Screw, 1/2- 16 x 2



Standard Hardware Sizing

When a washer or nut is identified as 1/2" (M8), this is the *Nominal size*, meaning the *inside diameter* is 1/2 inch (8mm metric thread diameter); if a second number is present it represents the *threads per inch* (distance between threads).

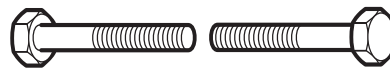
When bolt or capscrew is identified as 1/2 - 16 x 2" (M8 - 1.25 x 50), this means the *Nominal size*, or body diameter is 1/2 inch (8mm metric thread diameter), the second number, 16, represents the *threads per inch*, (*distance between threads*). The final number is the body length of the bolt or screw, 2 inches (50mm).

NOTES

- These torque values are to be used for all hardware excluding: locknuts, self-tapping screws, thread forming screws, sheet metal screws and socket head setscrews.
- Recommended seating torque values for locknuts:
 - for prevailing torque locknuts - use 65% of grade 5 torques.
 - for flange whizlock nuts and screws - use 135% of grade 5 torques.
- Unless otherwise noted on assembly drawings, all torque values must meet this specification.

Common Hardware Types

Hex Head Capscrew



Washer



Carriage Bolt



Hex Nut

Wrench & Fastener Size Guide

1/4" Bolt or Nut Wrench—7/16"	5/16" Bolt or Nut Wrench—1/2"	3/8" Bolt or Nut Wrench—9/16"	7/16" Bolt or Nut Wrench (Bolt)—5/8" Wrench (Nut)—11/16"	1/2" Bolt or Nut Wrench—3/4"
M6 Bolt or Nut Wrench—10mm	M8 Bolt or Nut Wrench—13mm	M10 Bolt or Nut Wrench—17mm	M12 Bolt or Nut Wrench—19mm	M14 Bolt or Nut Wrench—22mm

